



Mammals of the Brazilian Pantanal

A Photo Guide

edited by Paul Donahue



Mammals of the Pantanal

A Photo Guide

This collection of photos is meant to serve as a guide for learning and identifying the mammals of the Pantanal, a vast mosaic of wetlands, grasslands and woodland located in southwestern Brazil in the states of Mato Grosso and Mato Grosso do Sul and in adjacent eastern Bolivia and northeastern Paraguay .

The photographs included are drawn largely from the internet as well as from my own photo collection.

Paul Donahue
May 2009

The extent of the Pantanal is estimated, depending on the source, at between about 140,000 square kilometers (54,000 square miles) and 210,000 square kilometers (81,000 square miles).

MAP OF THE PANTANAL



KEY

- 1 FAZENDA RIO NEGRO 2 FAZENDA SAO JOSE 3 FAZENDA POUSO ALTO
- 4 REFUGIO ECOLOGICO CAIMAN 5 POUSO ALEGRE

Order MARSUPIALIA



Bare-tailed Woolly Opossum
Caluromys philander

Opossum Family
DIDELPHIDAE





Water Opossum
Chironectes minimus

Opossum Family
DIDELPHIDAE





White-eared Opossum *Didelphis albiventris*
Opossum Family DIDELPHIDAE



Agile Gracile Mouse Opossum *Gracilinanus agilis*
Opossum Family DIDELPHIDAE



Lutrine or Thick-tailed Opossum

Lutreolina crassicaudata

Opossum Family DIDELPHIDAE



Murine Mouse Opossum
Marmosa murina

Opossum Family DIDELPHIDAE





White-bellied Woolly Mouse Opossum
Micoureus constantiae
Opossum Family DIDELPHIDAE



Gray Short-tailed Opossum
Monodelphis domestica

Opossum Family
DIDELPHIDAE





Gray Four-eyed Opossum
Philander opossum

Opossum Family
DIDELPHIDAE



Order
XENARTHRA
(formerly EDENTATA)



Giant Anteater *Myrmecophaga tridactyla*
Anteater Family MYRMECOPHAGIDAE



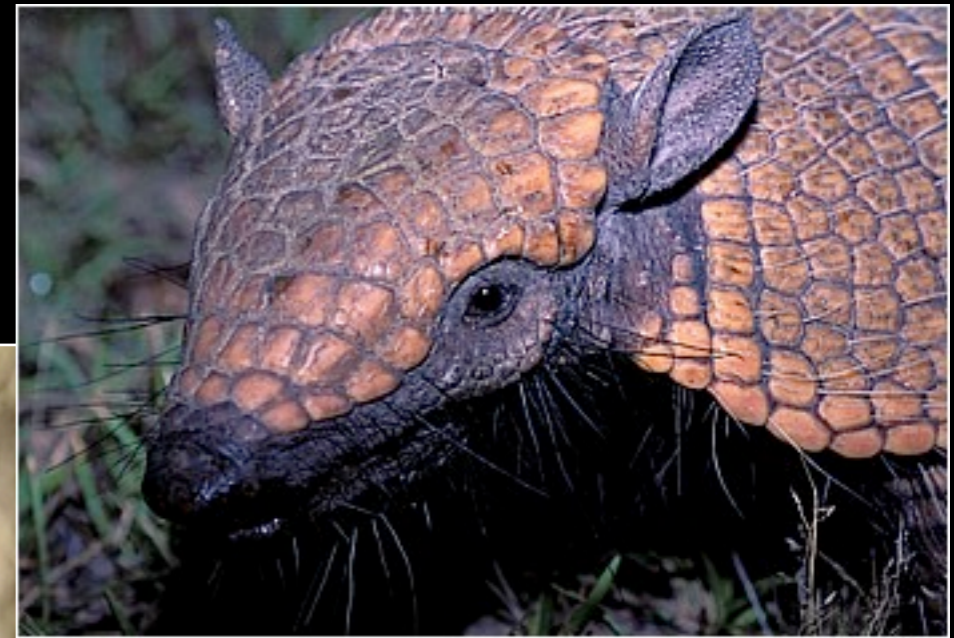
Collared Anteater or Southern Tamandua
Tamandua tetradactyla
Anteater Family MYRMECOPHAGIDAE



Nine-banded Armadillo *Dasypus novemcinctus*
Armadillo Family DASYPODIDAE



Seven-banded Armadillo *Dasylops septemcinctus*
Armadillo Family **DASYPODIDAE**



Six-banded Armadillo *Euphractus sexcinctus*
Armadillo Family DASYPODIDAE



Family Dasypodidae
Cabassous unicinctus
T. Carter
ASMI - MII



Southern Naked-tailed Armadillo
Cabossous unicinctus
Armadillo Family **DASYPODIDAE**



Eats mainly
ants and
termites



Giant Armadillo *Priodontes maximus*
Armadillo Family DASYPODIDAE



Southern Three-banded Armadillo
Tolypeutes matacus

Armadillo Family **DASYPODIDAE**

Order CHIROPTERA



aerial
insectivores

Long-nosed Bat *Rhynchonycteris naso*
Sac-winged or Sheath-tailed Bat Family
EMBALLONURIDAE

Fishing Bat *Noctilio sp.*

Bulldog Bat Family
NOCTILIONIDAE



eats
insects
and fish

Mustached Bat
Pteronotus parnellii

aerial
insectivores



Leaf-chinned and Mustached Bat Family
MORMOOPIDAE

Leaf-nosed Bat Family PHYLLOSTOMIDAE

great diversity of
specialized feeding
habits

Common Long-tongued Bat
Glossophaga sorocina



Tent-making Bat
Uroderma bilobatum



Short-tailed Fruit Bat
Carollia perspicillata



Common Vampire Bat
Desmodus rotundus



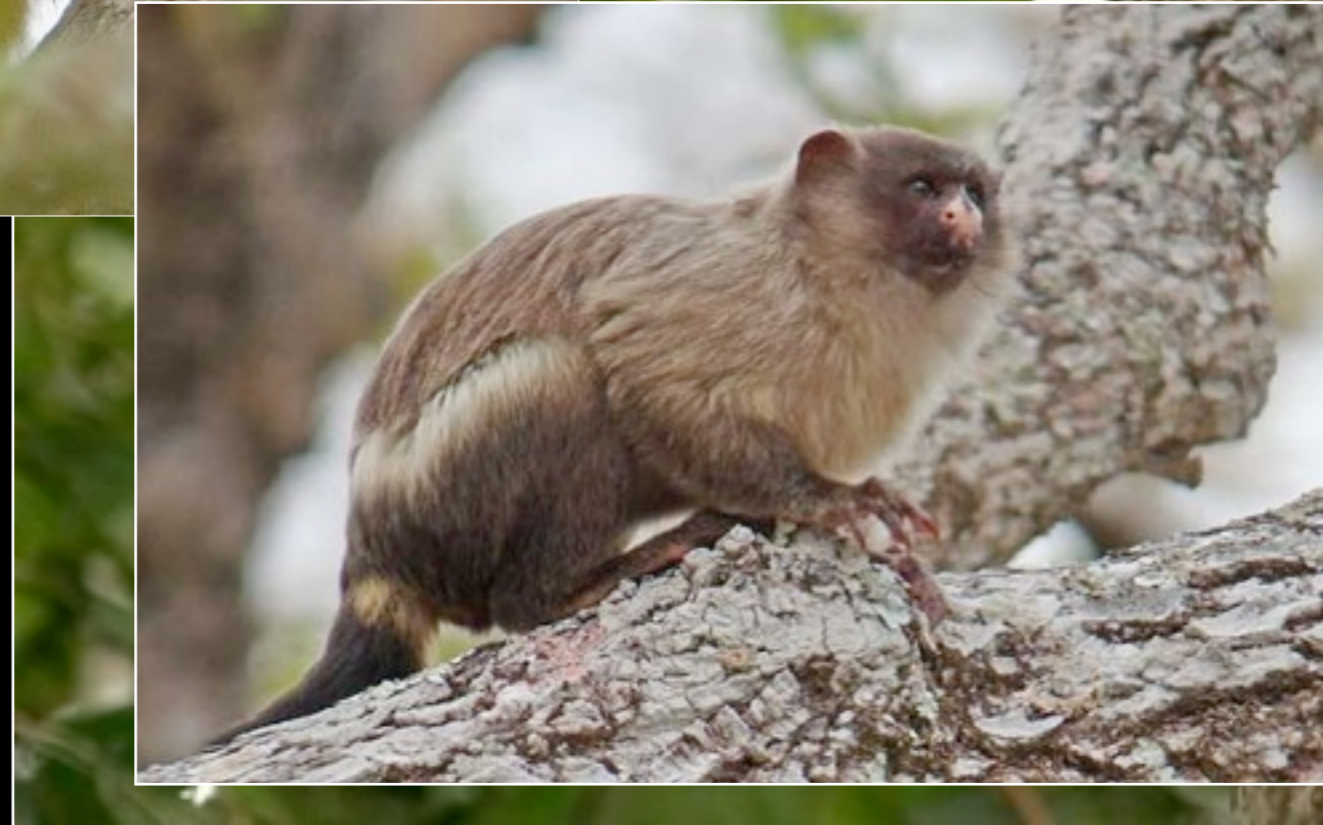


Hoary Bat *Lasiurus sp.*

aerial
insectivores

Vespertilionid Bat Family **VESPERTILIONIDAE**

Order PRIMATES



Black-tailed (Silvery) or Pantanal Marmoset
Mico (=Callithrix argentata) melanura

Marmoset & Tamarin - Family CALLITRICHIDAE



Brown Capuchin *Cebus apella*
Monkey Family **CEBIDAE**



Family Cebidae
Aotus azarai
R. D. Lord
ASM - MIL



Azara's or Southern Night Monkey *Aotus azarae*
Monkey Family CEBIDAE

White-eared or
Bolivian Gray Titi Monkey
Callicebus donacophilus



Monkey Family
CEBIDAE





male



female

Black Howler Monkey
Alouatta caraya

Monkey Family CEBIDAE

Order CARNIVORA



Crab-eating Fox *Cerdocyon thous*

Dog Family **CANIDAE**



Maned Wolf *Chrysocyon brachyurus*
Dog Family CANIDAE



Bush Dog *Speothos venaticus*
Dog Family CANIDAE



South American Coati
Nasua nasua

Raccoon Family
PROCYONIDAE



Crab-eating Raccoon
Procyon cancrivorus

Raccoon Family
PROCYONIDAE



Neotropical River Otter *Lontra longicaudis*
Weasel Family MUSTELIDAE



Giant Otter *Pteronura brasiliensis*
Weasel Family MUSTELIDAE

Striped Hog-nosed
Skunk
Conepatus semistriatus



Weasel Family
MUSTELIDAE



Tayra *Eira barbara*
Weasel Family
MUSTELIDAE

Lesser or
Southern Grison
Galictis cuja



Weasel Family
MUSTELIDAE



Pantanal Cat
Leopardus braccatus

Cat Family
FELIDAE





Ocelot *Leopardus pardalis*



Cat Family
FELIDAE



Oncilla or Little Spotted Cat *Leopardus tigrinus*
Cat Family FELIDAE



Margay *Leopardus wiedii*
Cat Family FELIDAE



Puma *Felis concolor*
Cat Family FELIDAE





Jaguarundi
Herpailurus yagouaroundi

Cat Family FELIDAE



© FS-2005



Jaguar *Panthera onca*
Cat Family FELIDAE

Order
PERISSODACTYLA

Brazilian Tapir
Tapirus terrestris



Tapir Family TAPIRIDAE

Order
ARTIODACTYLA



Collared Peccary
Tayassu tajacu

Peccary Family
TAYASSUIDAE





White-lipped Peccary *Tayassu pecari*
Peccary Family TAYASSUIDAE



Marsh Deer *Blastocerus dichotomus*
Deer Family CERVIDAE



Pampas Deer *Ozotocerus bezoarticus*
Deer Family CERVIDAE



Red Brocket Deer
Mazama americana
Deer Family CERVIDAE



Gray Brocket Deer
Mazama gouazoubira

Deer Family
CERVIDAE



Rodentia
Sciuridae
Sciurinae
Urosciurus spadiceus

Cricetidae
Sigmodontinae
Akodon montensis
Akodon toba
Cerradomys scotti
Euryoryzomys nitidus
Holochilus chacarius
Holochilus sciureus
Hylaeamys megacephalus
Necomys lasiurus
Oecomys bicolor
Oecomys mamorae
Oligoryzomys chacoensis
Oligoryzomys fornesi
Oligoryzomys nigripes

Erethizontidae
Erethizontinae
Coendou prehensilis

Caviidae
Caviinae
Cavia aperea

Hydrochoerinae
Hydrochoerus hydrochaeris

Dasyproctidae
Dasyprocta azarae

Cuniculidae
Cuniculus paca

Echimyidae
Eumysopinae
Clyomys laticeps
Thrichomys pachyurus

Order

RODENTIA



Southern Amazon Red Squirrel - *Sciurus* (=Urosciurus) *spadiceus*

Squirrel Family **SCIURIDAE**



Montane Akodont or Montane Grass Mouse - *Akodon montensis*

New World Rats & Mice Family - CRICETIDAE or MURIDAE



Chaco Grass Mouse - *Akodon toba*

New World Rats & Mice Family - CRICETIDAE or MURIDAE



Lindbergh's Cerradomys - *Cerradomys scotti*

New World Rats & Mice Family - CRICETIDAE or MURIDAE

no photo available

Elegant Rice Rat - *Euryoryzomys nitidus*

New World Rats & Mice Family - CRICETIDAE or MURIDAE

no photo available

Chacoan Marsh Rat - *Holochilus chacarius*

New World Rats & Mice Family - CRICETIDAE or MURIDAE



Amazonian Marsh Rat - *Holochilus sciureus*

New World Rats & Mice Family - CRICETIDAE or MURIDAE



Azara's Broad-headed Oryzomys or Large-headed Rice Rat
Hylaeamys megacephalus

New World Rats & Mice Family - CRICETIDAE or MURIDAE



Hairy-tailed Bolo Mouse - *Necromys lasiurus*

New World Rats & Mice Family - CRICETIDAE or MURIDAE



White-bellied Oecomys or Bicolored Arboreal Rice Rat
Oecomys bicolor

New World Rats & Mice Family - CRICETIDAE or MURIDAE

no photo available

Mamore Oecomys or Mamore Arboreal Rice Rat
Oecomys mamorae

New World Rats & Mice Family - CRICETIDAE or MURIDAE

no photo available

Chacoan Colilargo or Chacoan Pygmy Rice Rat
Oligoryzomys chacoensis

New World Rats & Mice Family - CRICETIDAE or MURIDAE



Fornes' Colilargo or Fornes' Pygmy Rice Rat
Oligoryzomys fornesi

New World Rats & Mice Family - CRICETIDAE or MURIDAE



Black-footed Colilargo or Black-footed Pygmy Rice Rat
Oligoryzomys nigripes

New World Rats & Mice Family - CRICETIDAE or MURIDAE



Brazilian Porcupine
Coendou prehensilis
New World Porcupine Family
ERETHIZONTIDAE



Brazilian Guinea Pig *Cavia aperea*
Guinea Pig Family CAVIIDAE





Capybara *Hydrochaeris hydrochaeris*
Capybara Family HYDROCHAERIDAE



Green or Azara's Agouti
Dasyprocta azarae

Agouti & Acouchy Family **DASYPROCTIDAE**



Paca Cuniculus (=Agouti) paca

Paca Family CUNICULIDAE or AGOUTIDAE



Broad-headed Spiny-Rat
Clyomys laticeps

Spiny Rat & Tree Rat Family ECHIMYIDAE



Paraguayan Punaré - *Thrichomys pachyurus*
Spiny Rat & Tree Rat Family ECHIMYIDAE

Order LAGOMORPHA



Brazilian Rabbit
Sylvilagus brasiliensis
Rabbit Family LEPORIDAE





Eats mainly
ants and
termites

Giant Armadillo *Priodontes maximus*
Armadillo Family **DASYPODIDAE**